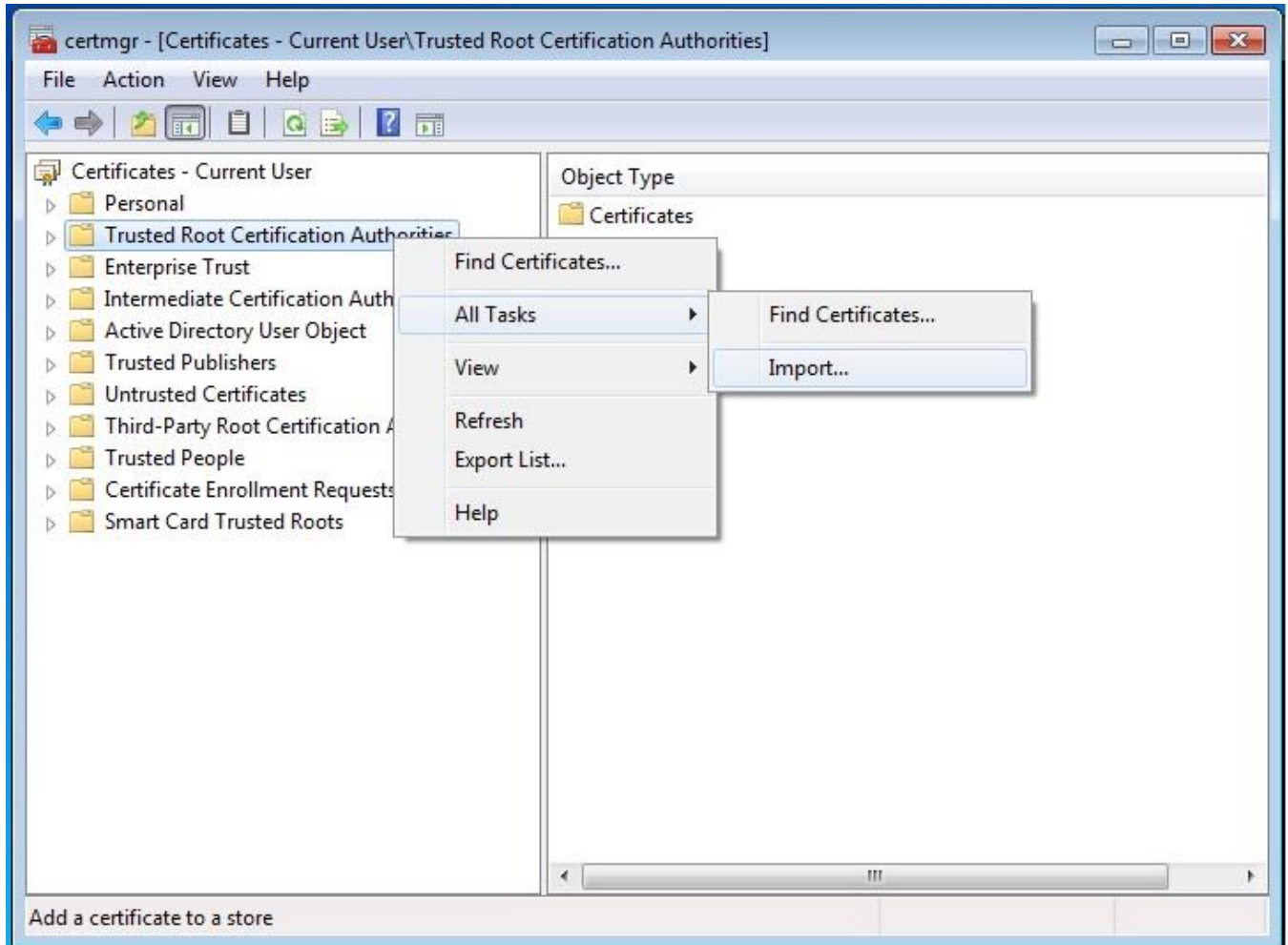


## eduroam pentru Windows 7 configurare

- **Cum instalezi certificatul E-UVT eduroam**
  - Downloadezi certificatul accesand link-ul: [https://it.uvt.ro/eduroam/wp-content/uploads/certificat\\_edu/rad-eduroam-1-cs\\_info\\_uvt\\_ro.pem](https://it.uvt.ro/eduroam/wp-content/uploads/certificat_edu/rad-eduroam-1-cs_info_uvt_ro.pem)
  - Click butonul **Start**
  - In casuta de search scriem **certmgr.msc** Selectam
  - **Trusted Root Certification Authorities** Click
  - dreapta si selectam **All Tasks -> Import...**



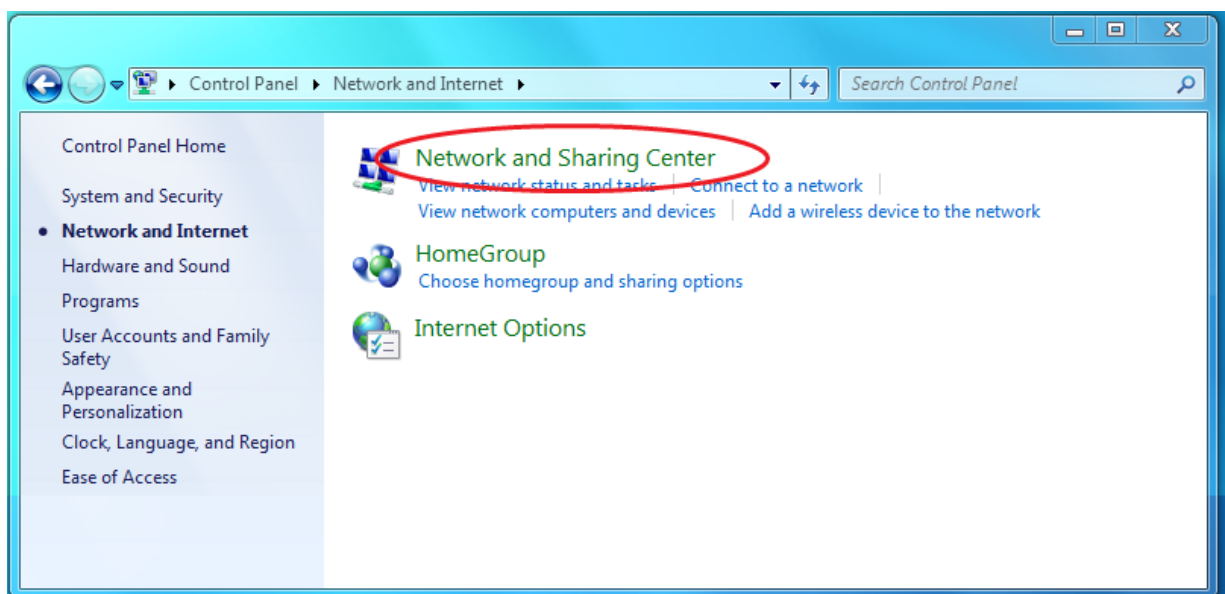
- Va apare o casuta,dam click **Next**
- Selectam ultima versiune downloadata a certificatului E-UVT eduroam si dam click **Next**
- Asigurativa ca certificatul va fi introdus in **Trusted Root Certification Authorities**
- Click **Next**
- **Accept** si **instalati** certificatul
- Multumim pentru ca folositi retea noastra !

## Manual pentru configurarea rețelei

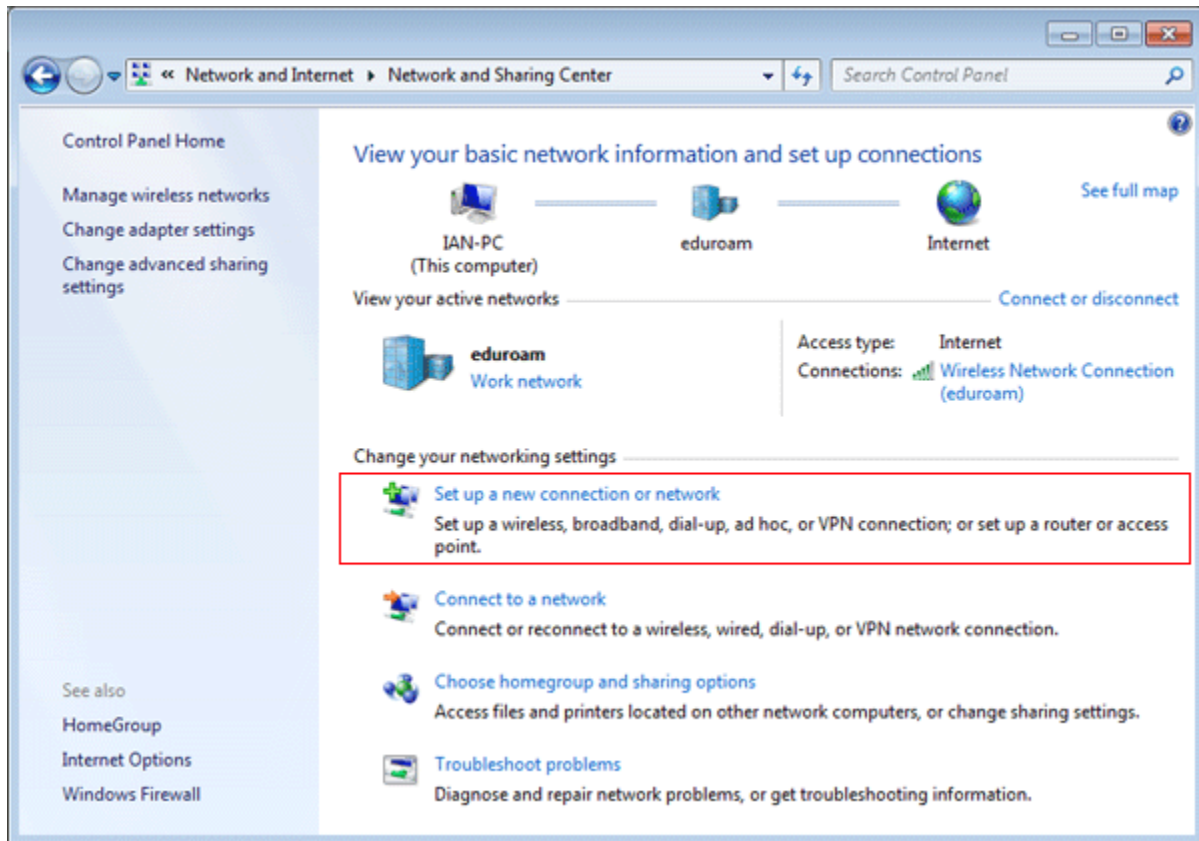
1. Selectam [Start] si apoi [Control Panel]. In Control Panel, selectam [Network and internet]



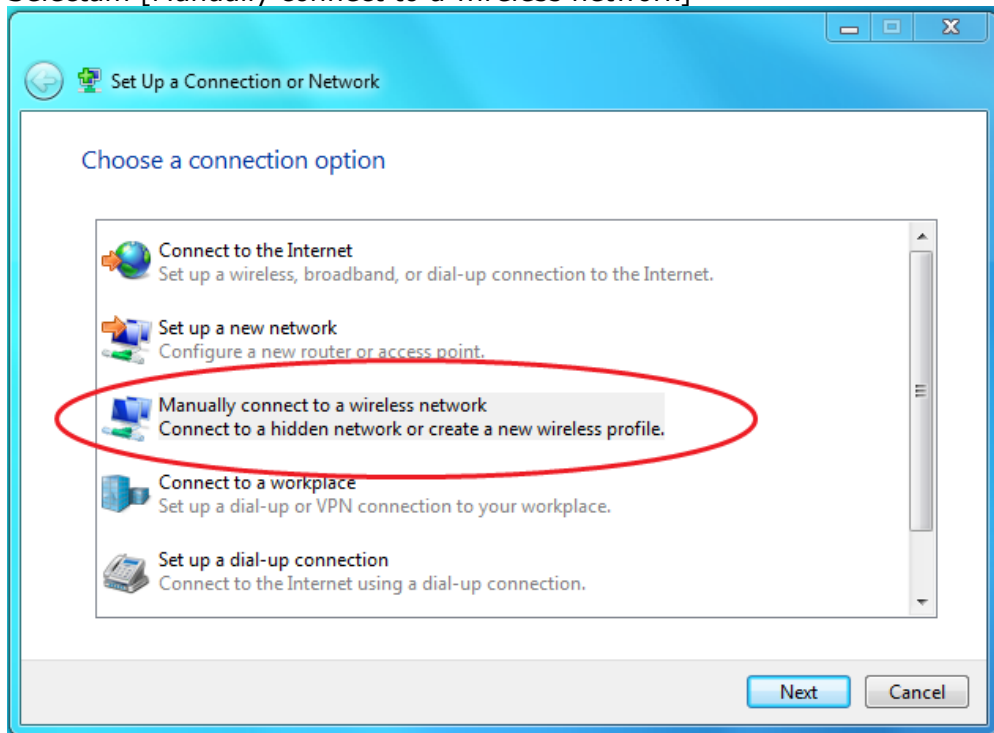
2. In panoul "Network and Internet", click pe [Network and Sharing Centre]



3. In "Network and Sharing centre", selectam [Setup a New Connection or Network]



4. Selectam [Manually connect to a wireless network]



5. In ecranul de manual de configurare, Network Name(numele retelei) este eduroam, Security Type este WPA2-Enterprise, Encryption Type este AES. Dup ace scriem datele de mai jos , click Next

Manually connect to a wireless network

Enter information for the wireless network you want to add

Network name:

Security type:

Encryption type:

Security Key:   Hide characters

Start this connection automatically

Connect even if the network is not broadcasting

Warning: If you select this option, your computer's privacy might be at risk.

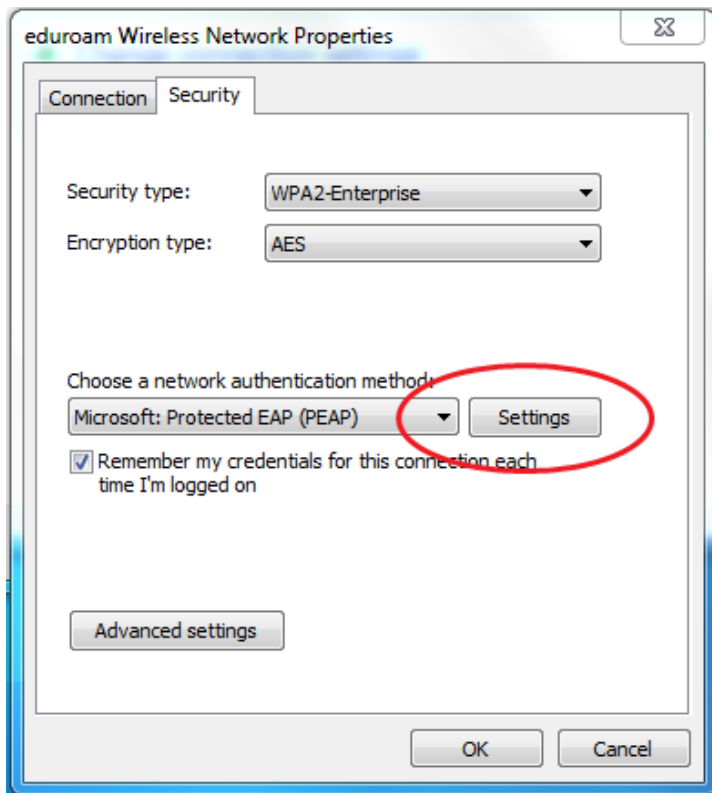
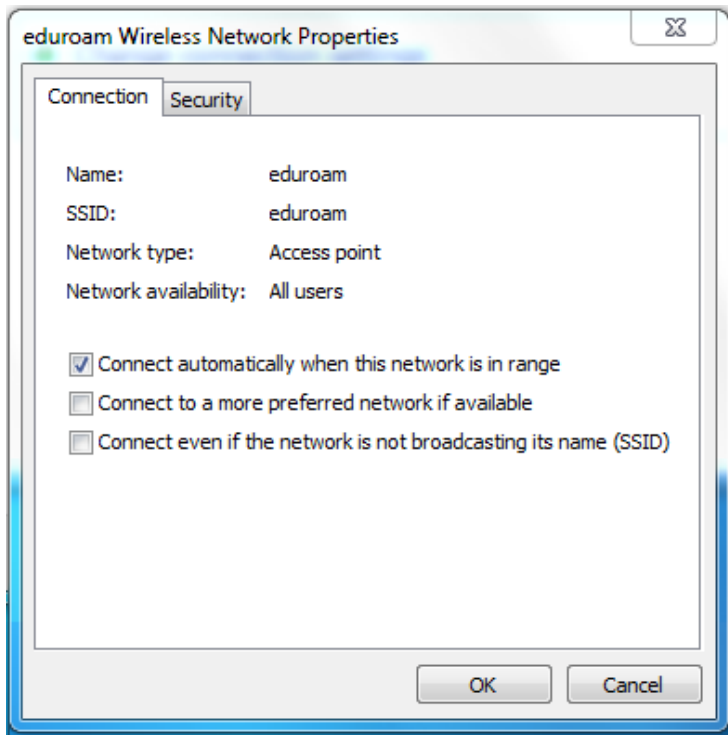
6. O sa primim o confirmare cum ca retea a fost configurata si apoi selectam [Change Connection Settings]

Manually connect to a wireless network

Successfully added eduroam

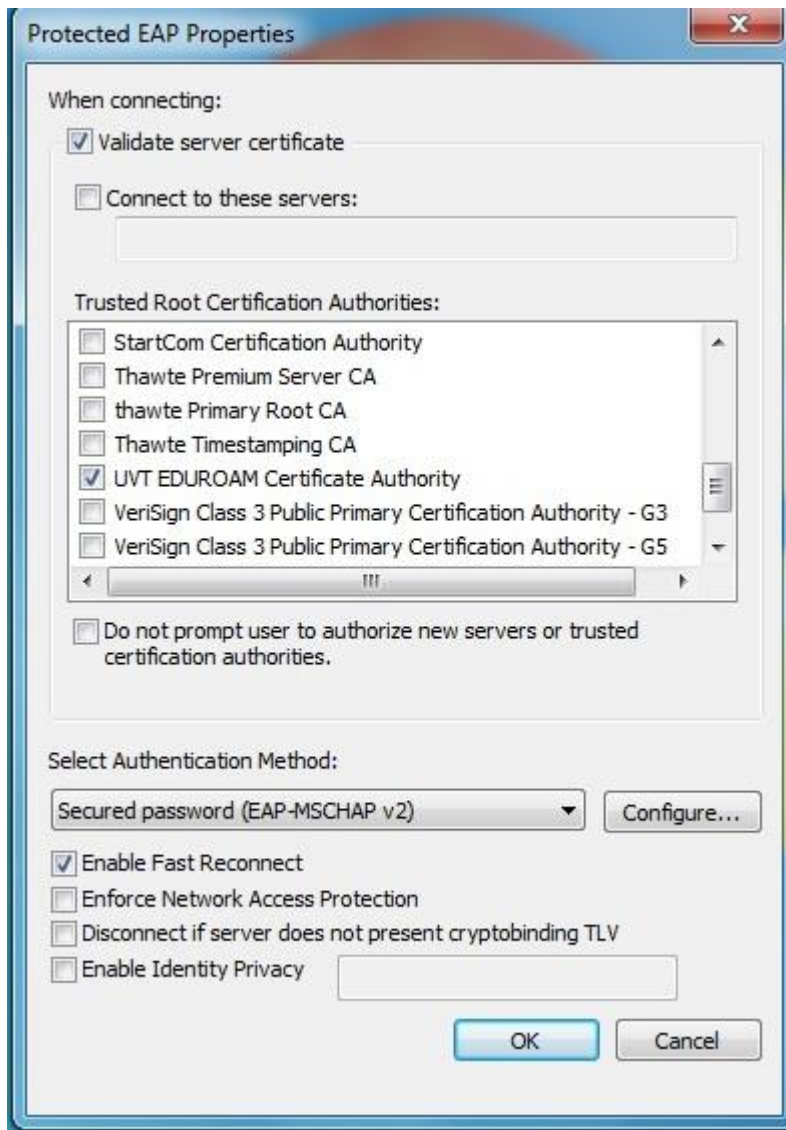
[→ Change connection settings](#)  
Open the connection properties so that I can change the settings.

7. Selectam [Security] si apoi la [Microsoft: Protected EAP (PEAP)], click pe settings.

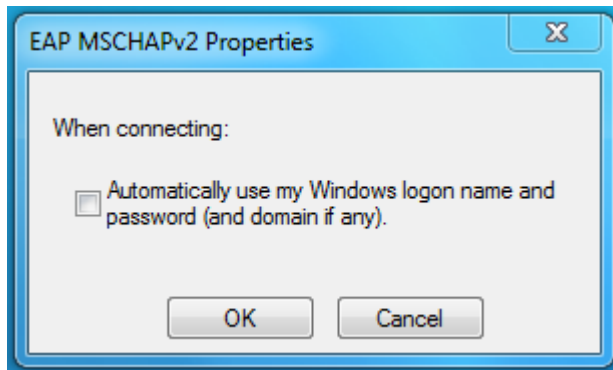


8.

- In proprietatile PEAP bifam casuta care scrie Validate Server Certificate.
- Debifam **Connect to these servers** .
- In **Trusted Root Certification Authorities** selectam **AddTrust? External CA Root**.
- Debifam casuta care zice **Do not prompt user to authorize new servers or thrusted certification authorities**, si bifam **Enable Fast Reconnect**
- la **Secured password**, click pe butonul configure.

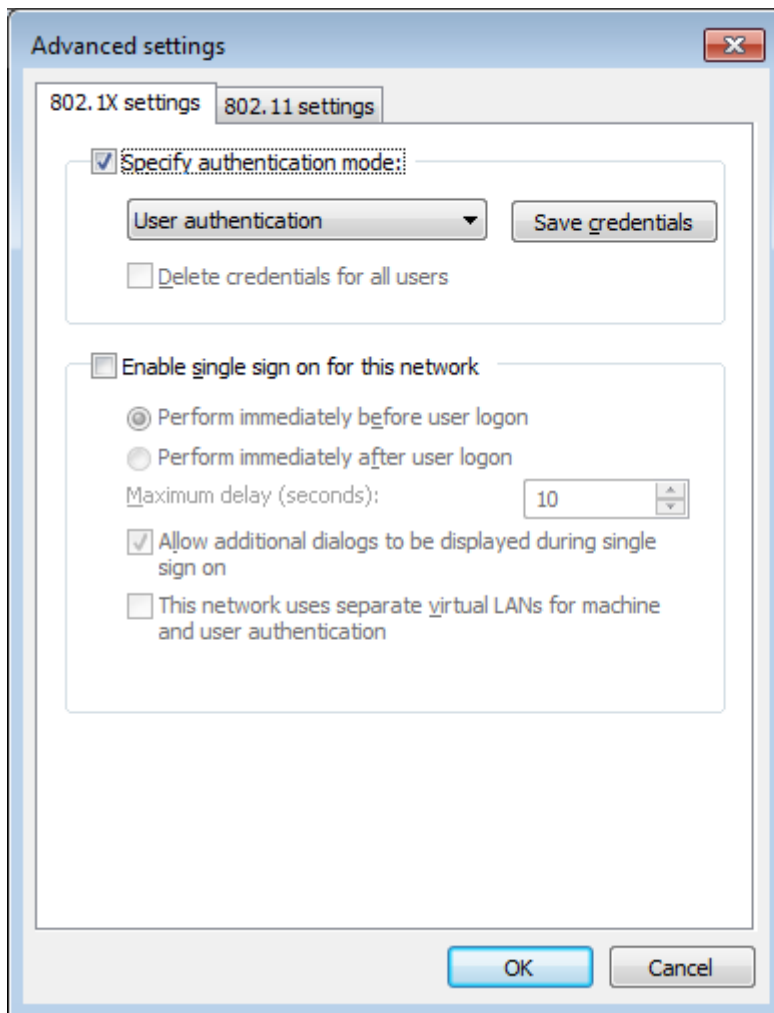


9. Debifati casuta ca sa folositi credentialele windows, apoi click OK.



10. Din tabul Security din ecranul eduroam Wireless Network Properties, click pe butonul Advanced Settings.

11. In Advanced Settings screen click pe 802.1X Settings tab siselectam [User Authentication] apoi click pe OK.

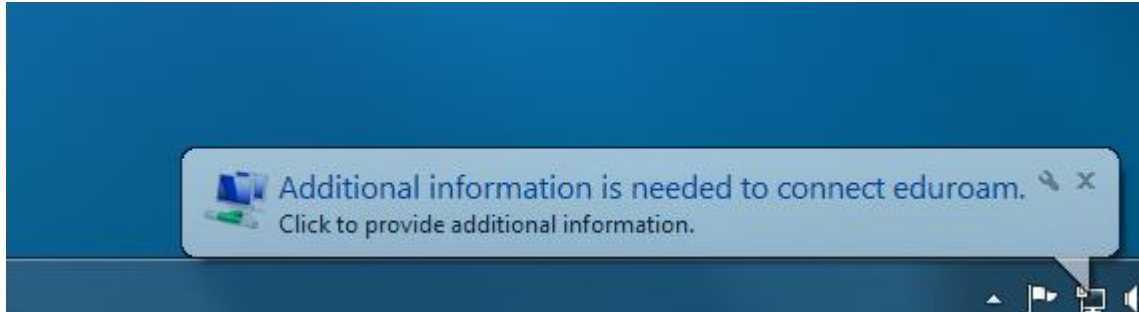


12. Selectam OK pentru a inchide toate casutele.



13. Selectam Close pentru a inchide fereastra de conectare manuala la rețeaua wireless.

14. Odata ce o sa fiti aproape de un punct de acces eduroam , selectam rețeaua eduroam din posibilele conexiuni. O sa primiti o casuta automata care va oferi un prompt de login atunci când este selectat.



15. După acesta detaliile de conectare trebuie să fie introduse pentru a realiza utilizarea deplină a rețelei . Introduceți contul de E-UVT numele de utilizator , urmat de @e-uvt.ro (aici prenume.num93@e-uvt.ro) și parola contului dvs. de E-UVT .

